



## WORKFORCE FOR THE FUTURE

Unlocking Modern Methods of Construction (MMC) for SMEs

Want to find out more?

Get in touch!

✉ [wftf@building-growth.com](mailto:wftf@building-growth.com)

☎ 0800 169 6563

🌐 [www.building-growth.com](http://www.building-growth.com)



The West of England Workforce for the Future programme has received £4m of funding from the European Social Fund as part of the 2014-2020 European Structural and Investment Funds Growth Programme in England. The Department for Work and Pensions (and in London the intermediate body Greater London Authority) is the Managing Authority for the England European Social Fund programme. Established by the European Union, the European Social Fund helps local areas stimulate their economic development by investing in projects which will sport skills development, employment, and job creation, social inclusion and local community regenerations. For more information visit <https://www.gov.uk/european-growth-funding>.

Funded by



In Partnership with



Delivered by



Supporting construction SMEs across the West of England through fully funded MMC and off-site construction training

## What can Building Growth South West offer?

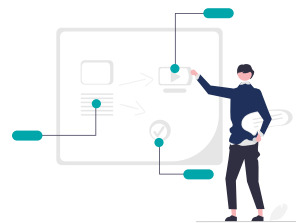
Building Growth South West is delivering Workforce for the Future support on behalf of the West of England Combined Authority in collaboration with Bristol Housing Festival, MOBIE and other regional partners.



Opportunities to learn new skills and techniques



Develop commercial relationships with off-site construction suppliers and providers



Funded training and support to secure long-term jobs in the MMC sector

“This project will create and deliver the training that is needed, to help bring about this transition and ensure that SMEs and young people are part of this exciting future for housebuilding.”

**George Clarke**  
Architect, TV Presenter and founder of MOBIE



## What does Workforce for the Future offer your business?

Workforce for the Future provides fully funded tailored, in-depth support to help you ensure your employees have the access to the training and support that your business needs to thrive. You'll receive support from our expert advisors to ensure your business can identify ongoing skills needs, attract and retain talented people, access the right training and development, and invest in your current and future workforce.

### Workforce for the Future Will Help Your Business:



Develop a more motivated, skilled and qualified workforce



Increase digital skills and expertise, and foster innovation



Capture the financial benefits of improved performance and elevated productivity



Attract new talent, improve staff retention and develop future leaders



Boost business resilience and flexibility to overcome future challenges



Increase diversity and inclusivity in your workforce



Safeguard jobs and support employees through change